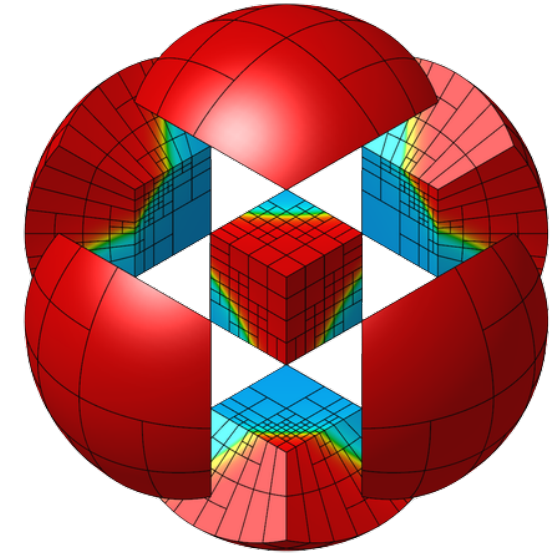


# MFEM: Recent Developments

MFEM Workshop 2021

October 20, 2021, Virtual Meeting

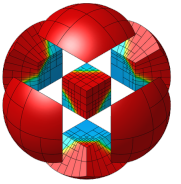


**Veselin Dobrev** and the MFEM team



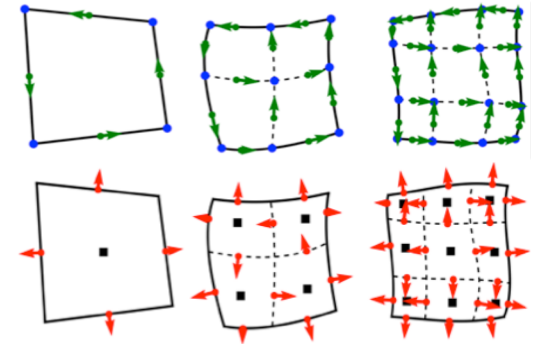
# MFEM: Modular Finite Element Methods library

MFEM is open-source C++ library for scalable FE research and fast application prototyping

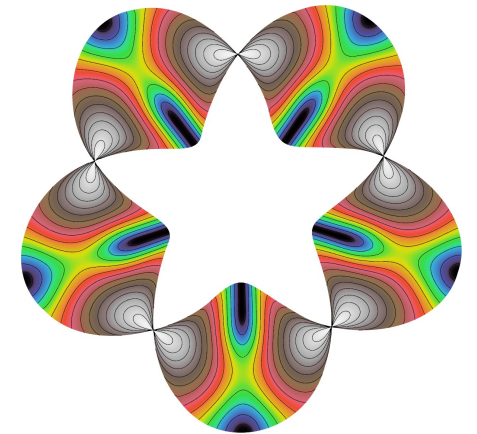


mfem.org

- Triangular, quadrilateral, tetrahedral, prismatic, and hexahedral; volume, surface and topologically periodic meshes
- Arbitrary order curvilinear mesh elements
- Arbitrary order  $H^1$ ,  $H(\text{curl})$ ,  $H(\text{div})$  and  $L^2$  elements
- Local conforming and non-conforming refinement
- NURBS geometries and discretizations
- Bilinear and linear forms for variety of methods (Galerkin, DG, DPG, IGA, ...)
- Sparse matrices, smoothers, Krylov solvers, eigensolvers
- Scalable assembly and linear solvers through hypre
- Non-linear operators and non-linear solvers
- Explicit and implicit high-order time integration
- Example codes & Miniapps – simple proxies for high-order discretizations of various physics
- Integration with hypre, PETSc, SUNDIALS, STRUMPACK, and more



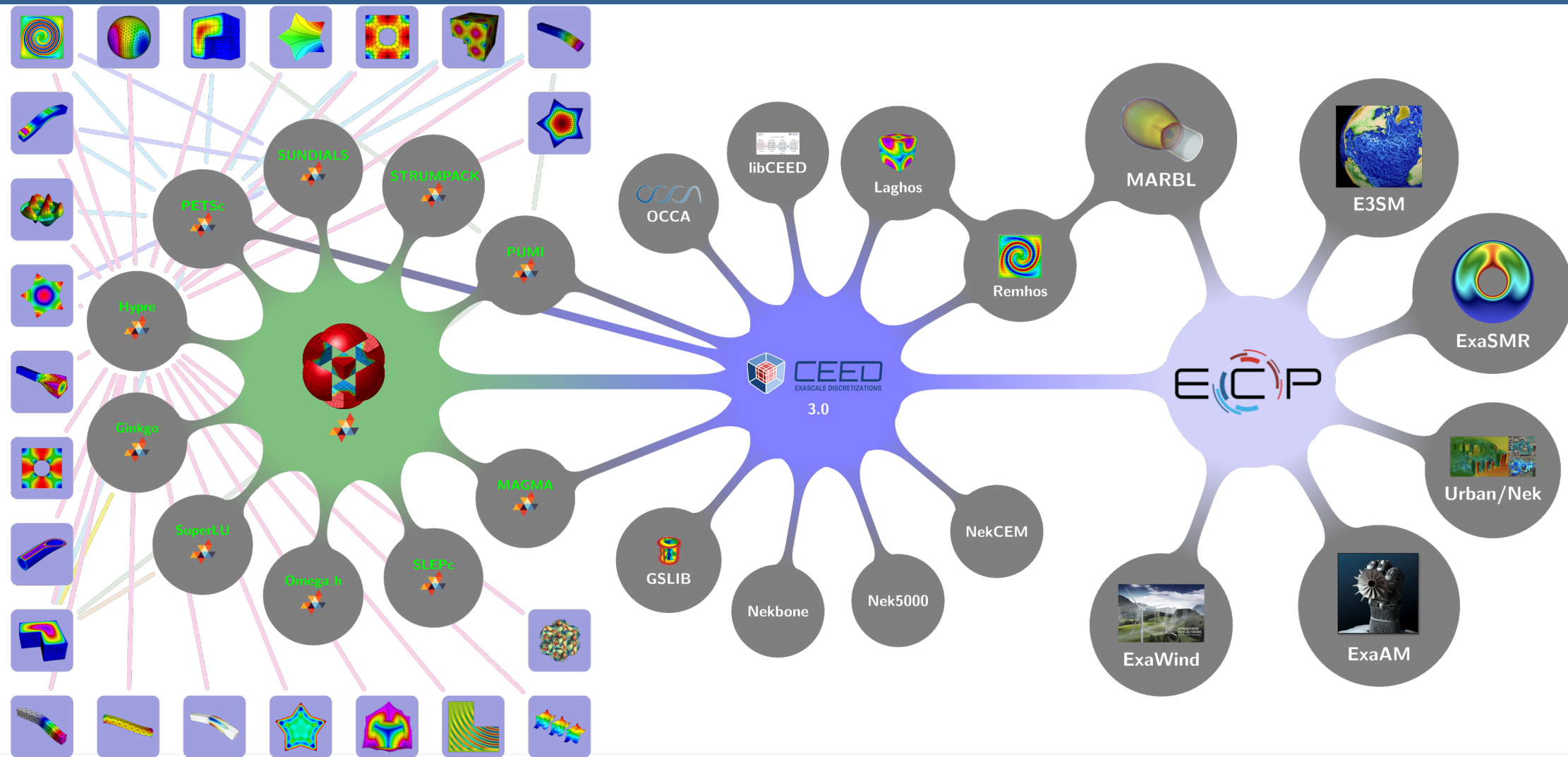
*Linear, quadratic and cubic finite element spaces on curved meshes*



*Maxwell eigenmode on a Mobius strip, computed with LOBPCG+AMS*



# MFEM connections and integrations



# MFEM connections to other projects

---

- Part of the Extreme-scale Scientific Software Development Kit, xSDK: [xsdk.info](http://xsdk.info)
- Part of the FASTMath institute: [fastmath-scidac.llnl.gov](http://fastmath-scidac.llnl.gov)
- Engaged in SciDAC, e.g. RF-SciDAC and TDS-SciDAC

# New developments in MFEM

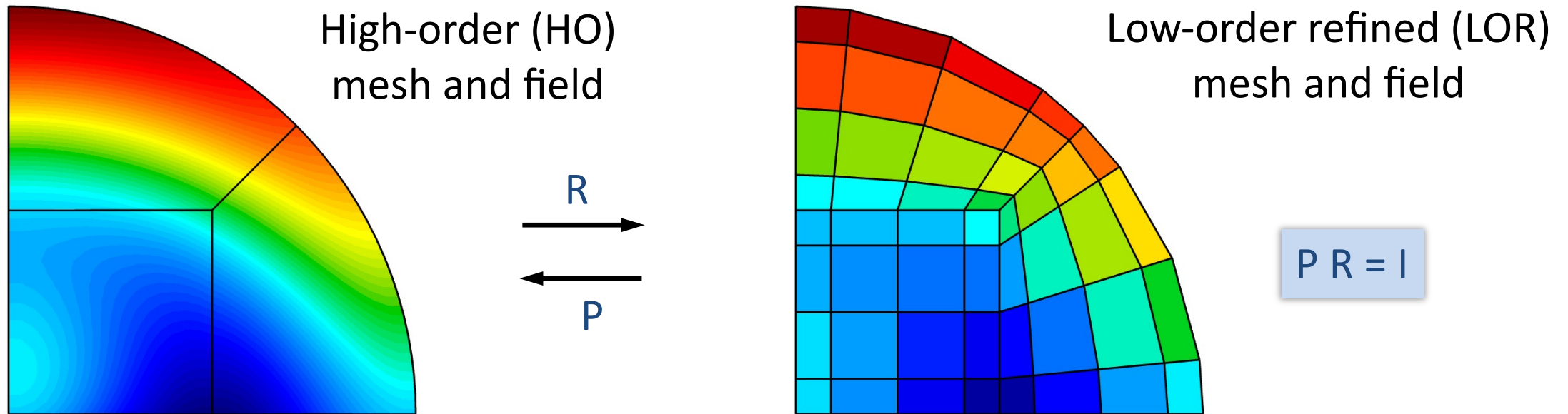
- Support for HYPRE preconditioners on GPUs
- Support for GPU-enabled PETSc
- Mesh optimization (TMOP) on GPU
- Memory manager improvements
- A64FX support (Fugaku CPUs)
- High-order  $\leftrightarrow$  Low-order-refined (HO/LOR) solution transfer
- Initial (serial) support for p- and hp-refinement
- Improved libCEED integration

# Highlight: support for HYPRE on GPUs

MFEM Build option	MFEM Run option	HYPRE w/o CUDA	HYPRE with CUDA
MFEM_USE_CUDA=NO	--device cpu	Yes	No
MFEM_USE_CUDA=YES	--device cpu	Yes	Yes
MFEM_USE_CUDA=YES	--device cuda	Yes	Yes

- Almost all examples, miniapps, and tests work (a few exceptions)
- Data will be moved between host and device as needed; e.g., due to:
  - Algorithm not available on GPU yet
  - Build and/or run configuration
- Ideally: develop on CPU, then use on GPU
- Note: CPU and GPU use different solver options; e.g., iterations will differ
- Optimize: use visual profiler to uncover unnecessary host-device transfers

# Highlight: HO $\leftrightarrow$ LOR solution transfer

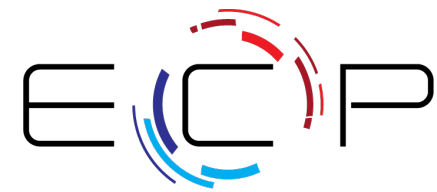


- Useful for connecting HO codes with (existing) LO codes
- R: interpolation or  $L^2$  projection (conservative, conditionally)
- Demo: `lor-transfer` in `miniapps/tools`

# Highlight: libCEED integration



CEED  
EXASCALE DISCRETIZATIONS



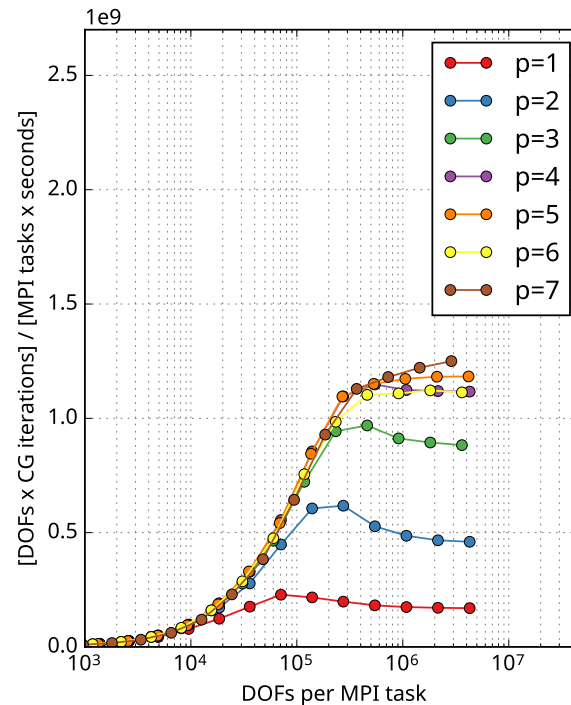
EXASCALE COMPUTING PROJECT

- libCEED: lightweight, portable, and performant operator evaluation
- Matrix-free algorithms with backends targeting CPUs and GPUs
- Integrated in MFEM for *diffusion, mass, advection*, for now

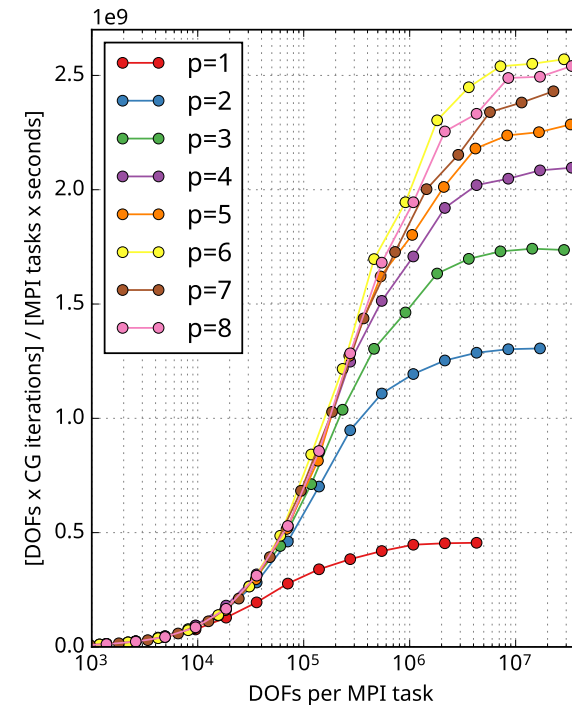
[github.com/CEED/libCEED](https://github.com/CEED/libCEED)

Backend:  
cuda

Improvements  
based on libCEED  
coming soon



Backend:  
ceed-cuda

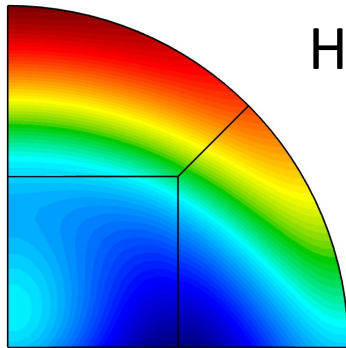




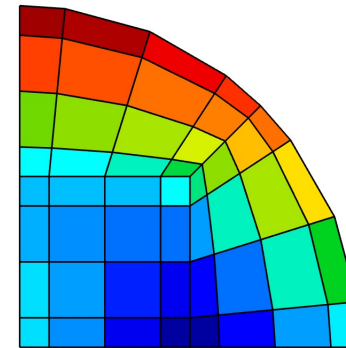
# New developments in MFEM (cont.)

- Simplified construction for LOR solvers including  $H(\text{div})$  and  $H(\text{curl})$  spaces
- Added high-order matrix-free auxiliary Maxwell solver for  $H(\text{curl})$  problems
- Support for NVIDIA's AmgX library
- Improved integration with the Ginkgo library
- Integration with the CEED-developed FMS library for high-order field and mesh I/O
- Added support for performance profiling with Caliper
- Improved testing: GitLab CI on LLNL's Quartz, Lassen, Corona machines

# Highlight: LOR solvers (a.k.a. FEM-SEM preconditioner)



HO operator



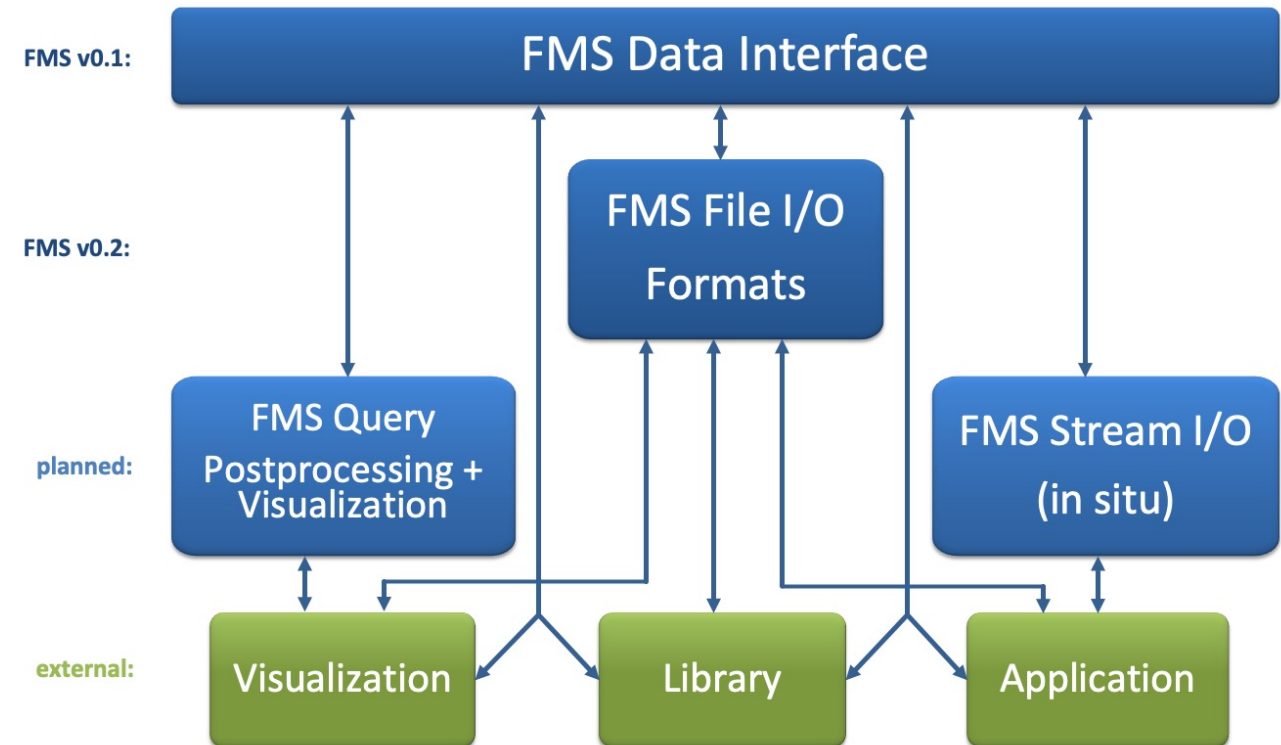
LOR operator

- Expensive to assemble
  - Use matrix-free action
  - Faster, memory efficient
  - Higher accuracy
  - Suitable for both CPU and GPU
- Same number of DOFs as HO operator
  - Assemble LOR operator (e.g., ParCSR)
  - Much sparser operator
  - Build preconditioner for this operator
  - Use as preconditioner for the HO operator

# Highlight: FMS



- Released FMS v0.2
  - **Field and Mesh Specification** for high-order FE data, all FE space types
  - For data exchange, file I/O
  - Supported in MFEM
- Version 0.2 added file I/O support:
  - YAML-like ASCII format
  - Optional Conduit library support: json, yaml, and hdf5 binary formats
  - Supported in VisIt
- [github.com/CEED/FMS](https://github.com/CEED/FMS)

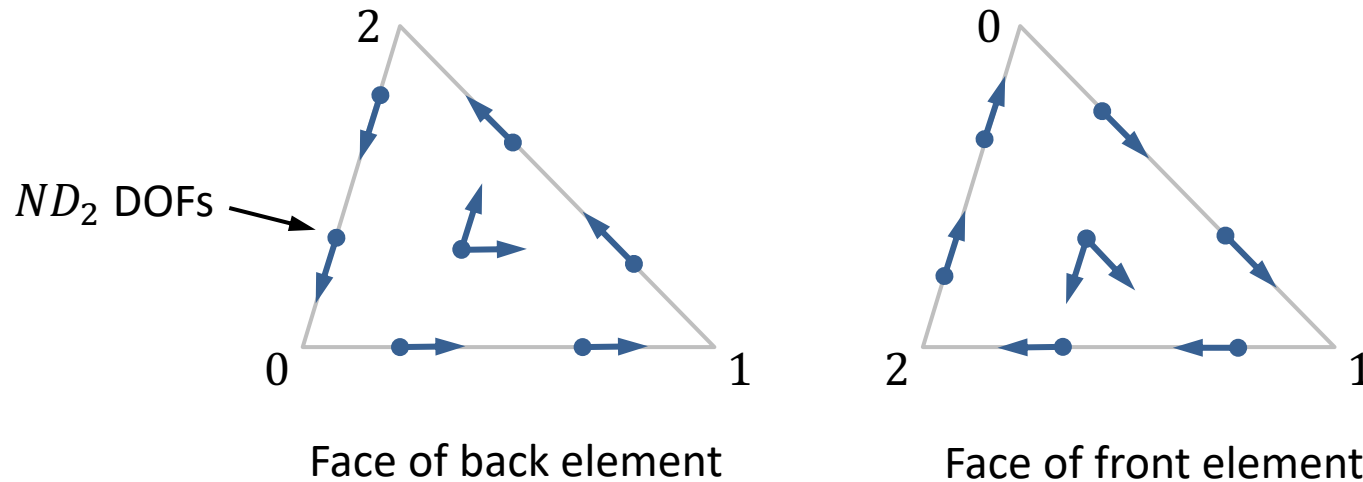


# New developments in MFEM (cont.)

- Higher order ( $p \geq 2$ )  $H(\text{curl})$  elements on tetrahedral meshes with refinement support
- Support for pyramid elements, lowest order FE spaces only (for now)
- C++ MFEM Jupyter Notebooks with inline GLVis visualization
- Initial support for google-benchmarks in `tests/benchmarks`
- Support for hr-adaptivity using TMOP-based error estimator
- Many more ...

# Highlight: Higher-order H(curl) on tetrahedra

- Added support for *arbitrary global-to-element* DOF transformations
- For most FE types the DOF transformation is *permutation + optional sign flip*
- Allows for any tetrahedron orientation with HO ( $p \geq 2$ ) H(curl) FEs
- Also needed for HO ( $p \geq 2$ ) H(curl) FEs on prisms and pyramids



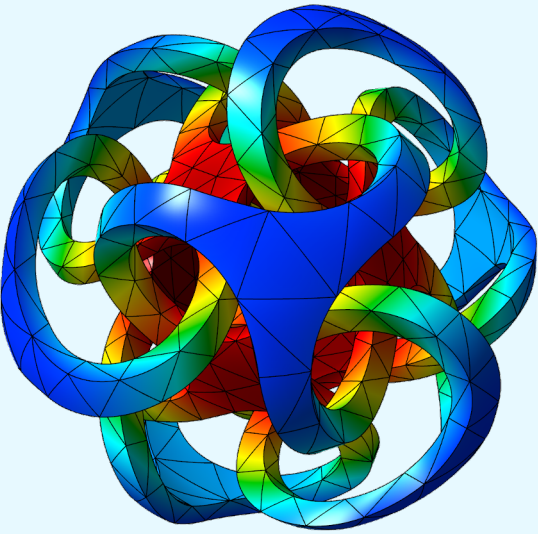
Mapping of interior DOFs requires a linear combination



# Visualization

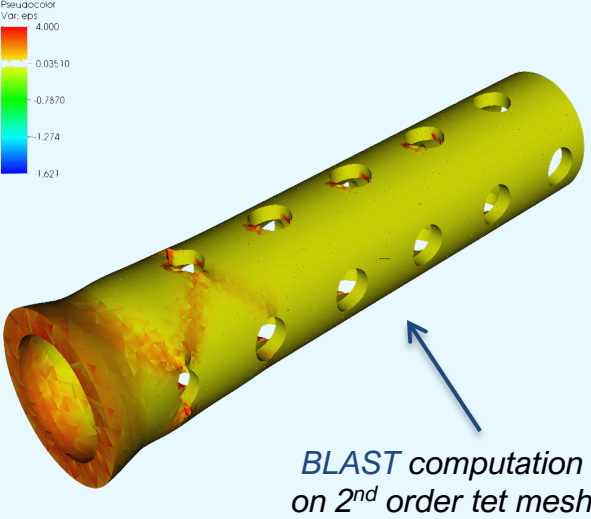
MFEM supports several options for accurate + flexible finite element visualization

**GLVis**  
*native lightweight visualization*



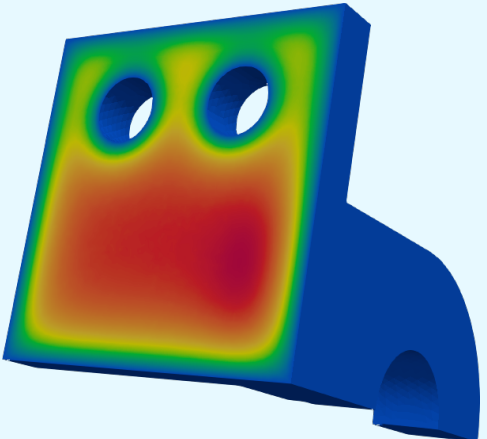
[glvis.org](http://glvis.org)

**Visit**  
*general data analysis tool*



[visit.llnl.gov](http://visit.llnl.gov)

**ParaView**  
*general data analysis tool*



[paraview.org](http://paraview.org)

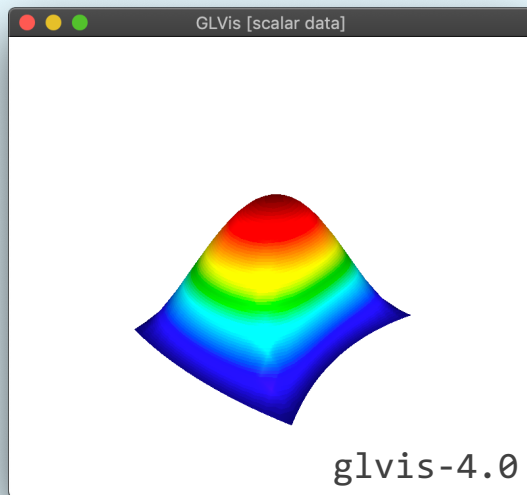
Additional I/O support: Conduit, ADIOS, VTK, FMS, ...

# Visualization

Web + Python support

## Modern OpenGL

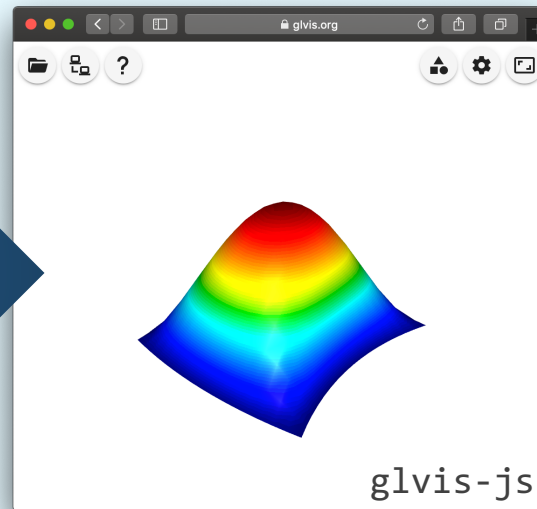
*OpenGL3, SDL*



[glvis.org](http://glvis.org)

## Web Visualization

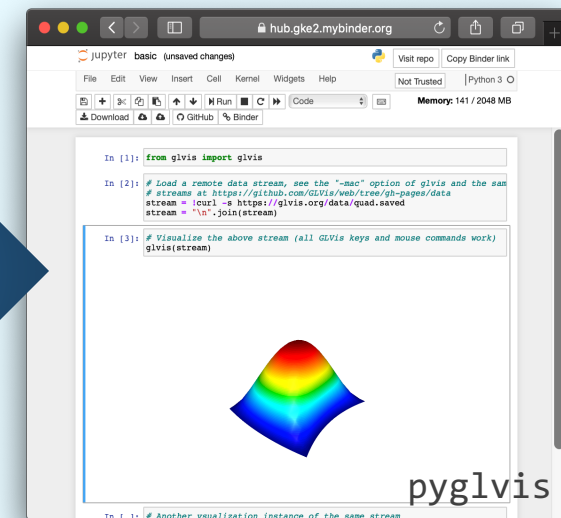
*JS/WebAssembly, Emscripten*



[glvis.org/live](http://glvis.org/live)

## FEM in Python

*PyMFEM, Jupyter, Binder*



`pip install glvis`

Try `glvis-js` and `pyglvis` in your desktop or mobile browser



# CASC

Center for Applied  
Scientific Computing



#### Disclaimer

This document was prepared as an account of work sponsored by an agency of the United States government. Neither the United States government nor Lawrence Livermore National Security, LLC, nor any of their employees makes any warranty, expressed or implied, or assumes any legal liability or responsibility for the accuracy, completeness, or usefulness of any information, apparatus, product, or process disclosed, or represents that its use would not infringe privately owned rights. Reference herein to any specific commercial product, process, or service by trade name, trademark, manufacturer, or otherwise does not necessarily constitute or imply its endorsement, recommendation, or favoring by the United States government or Lawrence Livermore National Security, LLC. The views and opinions of authors expressed herein do not necessarily state or reflect those of the United States government or Lawrence Livermore National Security, LLC, and shall not be used for advertising or product endorsement purposes.